



GAT MONTHLY MEMBERSHIP PROGRESS REPORT

Results as of: 11/30/2022

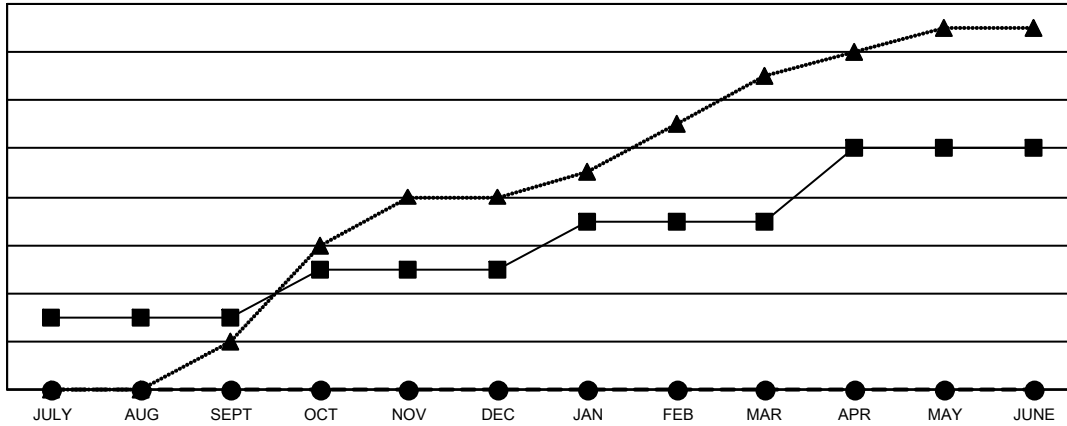
Multiple District 412

LOCATION: ZIMBABWE

| Clubs | | | |
|-----------------------|---------------|-----------|---------------|
| RESULTS FOR 2022-2023 | | | |
| QUARTER | NEW CLUB GOAL | NEW CLUBS | DROPPED CLUBS |
| JULY/AUG/SEPT | 3 | 0 | 0 |
| OCT/NOV/DEC | 2 | 0 | 0 |
| JAN/FEB/MAR | 2 | 0 | 0 |
| APR/MAY/JUNE | 3 | 0 | 0 |

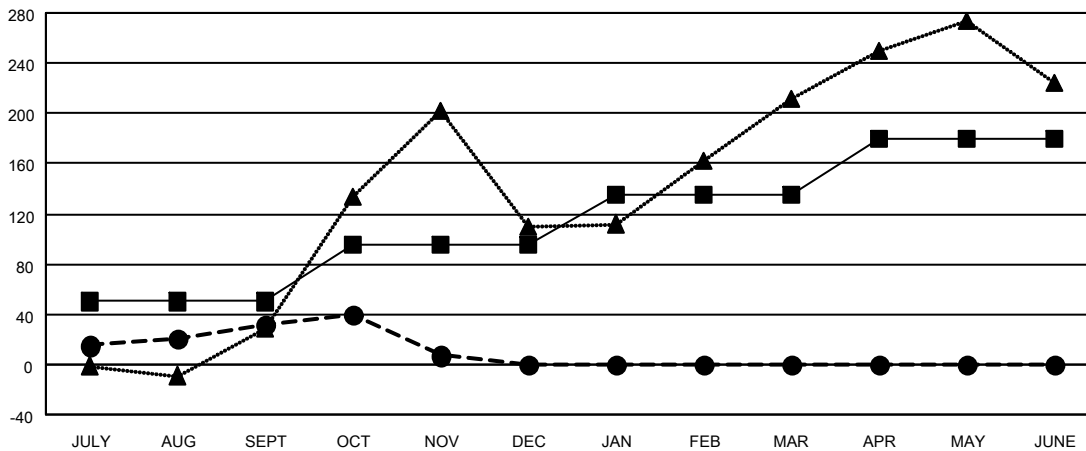
| Members | | | |
|-----------------------|------------------------|----------------------|--|
| RESULTS FOR 2022-2023 | | | |
| QUARTER | MEMBER GROWTH NET GOAL | MEMBER GROWTH ACTUAL | DROPPED MEMBERS ACTUAL (including transfers) |
| JULY/AUG/SEPT | 50 | 83 | 29 |
| OCT/NOV/DEC | 45 | 19 | 43 |
| JAN/FEB/MAR | 40 | 0 | 0 |
| APR/MAY/JUNE | 45 | 0 | 0 |

GOALS AND ACTUAL NEW CLUBS CUMULATIVE



- CURRENT YEAR GOALS FOR NEW CLUBS
- CURRENT YEAR ACTUAL NEW CLUBS
- ▲- LAST YEAR ACTUAL NEW CLUBS

GOALS AND ACTUAL MEMBERS CUMULATIVE



- MEMBER GROWTH NET GOAL
- MEMBER GROWTH ACTUAL
- ▲- LAST YEAR MEMBERSHIP ACTUAL

| | | |
|------------------------|---|--|
| DROPPED CLUBS: 0 | 32 CLUBS OF 84 ADDED 1 OR MORE NEW MEMBERS | GENDER DISTRIBUTION |
| DROPPED MEMBERS | CLICK HERE FOR CUMULATIVE MEMBERSHIP DATA | MALE 959 (54.80%) |
| DECEASED 6 | | FEMALE 791 (45.20%) |
| CLUB CANCELLED 0 | | NON BINARY 0 (0.00%) |
| OTHER 66 | | PREFER NOT TO ANSWER 0 (0.00%) |
| TOTAL 72 | | TOTAL FAMILY UNIT MEMBERS 438 |
| | | FAMILY MEMBERS PAYING HALF DUES 247 |